

East Ridge PTA Newsletter

Monday, October 13, 2008



Enrich, Encourage, Enlighten
www.erpta.org

President's Message

Lisa Goldman, PTA President

Wow! Can you believe that school started only 5 weeks ago? A lot of terrific PTA events have already happened!

We had a great Fall Festival in September! Many thanks to Carolyn Mullen and all the volunteers who helped her pull together a wonderful event for all our families.

We also started our popular Chess Club and After School Arts Programs. My thanks to Janet Campton and her team of volunteers for running the Chess Club program. Thanks go to Suzanne Brown and her volunteers for the ASAP classes. Both programs provide outstanding opportunities for our students.

Most recently we had our 3rd Annual Walk-a-Thon. This event has become a wonderful part of the East Ridge "experience" for students, staff and parents!

Big thanks go out to the multitude of volunteers who worked so hard on the Walk-a-Thon. Special thanks to Vice President for Fundraising Henmar Vlogman, and her planning committee -- Kate Pinkelman, Loren DiDomizio, Katy Pietraszak, and Janine Mifsud. You all did a great job! The kids had a great time and we met our fundraising goals!!

My biggest thanks go out to all of you who sent in your fundraising envelopes, raising \$25,268.00! Without your support the PTA wouldn't be able to enrich the lives of the students at East Ridge though PTA funded programs like Science Enrichment Classes, Reflections Arts Program, Six Traits Writing, Classic Books, Spelling Bee, Art Docents, Staff Appreciation, Ice Cream Social, and many more!

I look forward to many more exciting events and programs this year. Please contact me with any questions -- president@erpta.org

First PTA Program Night of the Year!

Tuesday, September 28th!

Mark your calendars for October 28 at 7:00pm for an ASAP Open House. If you have a child in the Jump Roping, Making Friends, Garage Band, or Cooking Classes and want to see the results of their hard work, this is the place.

And even if your child did not participate in an ASAP class you will still want to come and see great performances by some of East Ridge's talented students! Please come and cheer them on!

There will be a short PTA meeting, taking only about 10-15 minutes, prior to the start of the Open House to bring everyone up-to-date on PTA activities. Questions about PTA Program Nights? **Contact VP for Programs Trish Cooper** at programs@erpta.org.





Join PTA!

Your Membership Matters in Olympia!!

If you want to save RECESS from being eliminated from the school day - you need the lobbying Power of the PTA down in Olympia. It is issues like this and issues directly related to getting more money for education for our kids that the power of your PTA membership can do for your school.

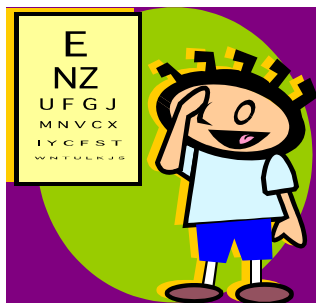
Our GOAL at East Ridge is to have 100% PTA Membership - which is to have one voting adult membership per child at our school. If you have 3 children at the school please consider buying a dual membership plus one for a grandparent.

Your PTA Membership is one of the most powerful things you can do to support your child's education - so please sign up today with no delay.

Other reasons why should I join the East Ridge PTA?

- Joining PTA is an action that shows support of schools, teachers and children, and a belief that collectively, we can make a difference!
- PTA provides the opportunity to serve, to volunteer, and contribute to student success and the welfare of all children in Washington State.
- PTA membership is not a fundraiser. Over 50% of your membership dues are sent to the state and national PTA to support the professional staff that provides advocacy for our children in Olympia and Washington, DC.

Moms, Dads, Grandparents, Uncles, Aunts and anyone else who wants the best for your kids, please join the East Ridge today and together, we can make a difference! Join East Ridge PTA at www.erpta.org - click on Registration.



Volunteers Needed!

Health Screening Day !

East Ridge's Health Screening Day is coming up on Tuesday, October 28. We need parent volunteers to assist the children with vision and hearing screening.

Volunteers could help out during one or two shifts: 8:45-11:15AM and 12:30-2:45PM. We will need 12 volunteers at each shift. Of course it would be wonderful if you could do both shifts!

Please contact Linda Turkstra, Volunteer Coordinator as soon as possible if you can help out. Her email address is volunteer@erpta.org.

A final schedule of volunteers will be emailed out once everything's settled.

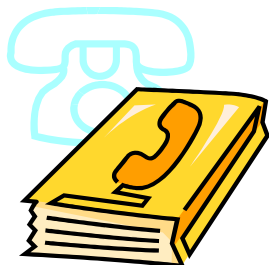
School Directory

Coming Soon!

Each family at East Ridge will be provided with a free school directory, courtesy of the PTA. A second complimentary copy will be offered to all PTA members. Additional copies may be purchased for \$10 .

The directories will be delivered to the classrooms and distributed to the youngest child in each family once they are available. Look for them sometime in late October!

Questions? **Contact Directory Chair Nancy Nygren** at directory@erpta.org





Popcorn Fridays

We Need You!

The Popcorn Friday Committee needs some more volunteers to help make and sell popcorn on Popcorn Fridays. This is a fun and easy way to help out at the school - and the kids LOVE it!

If you are available to help on October 17, November 14, December 19, January 23, February 27, March 27, April 24, May 22 or June 12 from 11am to about 2pm, or any part of those times please contact **Popcorn Friday Chair Angela Bordonaro** at popcorn@erpta.org.



Box Tops Collection Week is Here!

October 13-17th

Our first Box Tops collection of the year is here! Help make a difference in our school by sending in your Box Tops. Our goal this year is to earn over \$1300 through Box Tops for Education.

Box Tops are wide spread and can be found on a variety of products ranging from napkins to cereal to plastic bags - the list seems endless! Collecting Box Tops is an excellent way to support our PTA. There will be a prize for the student who brings in the most Box Tops as well as a drawing for a prize just for participating (only one entry per participating student).

To enter the contest, please print the student's and teacher's name on a piece of paper, then place it, along with your trimmed Box Tops, in a plastic bag.

Collection boxes will be located throughout the school including a big one by the front office for you to drop off your Box Tops. Be sure to check the expiration dates on your Box Tops. Only unexpired Box Tops will be counted.

Questions or comments please contact **PTA Box Tops Coordinator Bea Creel** at boxtops@erpta.org. Thank you and good luck!!



Calling all Shutterbugs!

Photos needed for Yearbook and DVD!

We are looking for parents who are willing to take lots of pictures of the various events and class activities at East Ridge this year and send them in for the East Ridge Yearbook and year-end DVD.

If you are willing to be a historian for your child's class, please let us know by sending an email to yearbook@erpta.org. We would like at least one parent per class to make sure that we get lots of pictures of the kids so that they are well represented in the yearbook. We are still looking for class representatives, particularly for the kindergarten and sixth grades where we have some openings, but the more historians, the merrier!

If you do not wish to be a historian but are willing to send in pictures periodically, that's great too! Send a note to yearbook@erpta.org so that we can tell you how!



East Ridge School Newsletter

Be sure to read BOTH!

You are currently reading the East Ridge PTA Newsletter. The school sends out it's own newsletter via email once a month, and will also post it on their website www.nsd.org/eastridge. Just as the PTA does with this newsletter, a direct link to the school newsletter will be emailed to all East Ridge families who have provided the school with an email address.

If you haven't already, please sign up to receive the newsletter email by sending a blank message to ERParents-join@lists.nsd.org.

A limited number of printed copies will be available in the East Ridge office for those parents who cannot access the newsletter online. This is our primary vehicle for communicating to parents, and we encourage you to please read it.

If you have any questions regarding the East Ridge SCHOOL newsletter, please contact Rae Anne Jordan or Barb Warner at (425) 408-4400 or erparents-owner@lists.nsd.org.



eScrip

Supporting East Ridge PTA is Easy and Simple

This program is an easy way to raise funds to support our kids and school without any extra out of pocket expense through everyday purchases made at Safeway.

The more individuals who sign up and use their Safeway Club Card at each purchase, the more we earn and the less funds we have to raise through other means to support the programs PTA provides for students and staff.

Last month a flyer was sent home providing information regarding this important fundraising program. It also included a registration form on the back for those new to the school and/or to the eScrip program.

Please take a moment to fill out the form or register online at www.escrip.com (Our group ID is 8652002) then every time you make a purchase, regardless how big or small, Safeway will donate up to 4% of the sale to East Ridge PTA. It's that easy!

Questions? **Contact eScrip Chair Bea Creel** at escrip@erpta.org.



PTA's *The Child Advocate* Magazine

Now online!

The Washington State PTA is pleased to announce that its premier parent involvement magazine, *The Child Advocate* is now available as an online membership benefit available to all 150,000 PTA members statewide.

The online version of *The Child Advocate* will include the same great articles with helpful tips for parents that *The Child Advocate* has been known for during the past 16 years.

To see the latest online issue of *The Child Advocate*, click on this link http://www.wastatepta.org/programs/child_advocate.htm



Friends of the Library

Access the Library from Home

Did you know you can access the school library catalog from home? It's simple. Follow these steps:

1. On the East Ridge web site (www.nsd.org/eastridge), click on "Staff Web Pages".
2. Choose "Library".
3. Click on "Catalog and Web Links".
4. Click on the "Catalog" tab along the top of the page.

Here's another great idea. Your child can make a list of books to find when their class gets to the library. Have your child follow these steps:

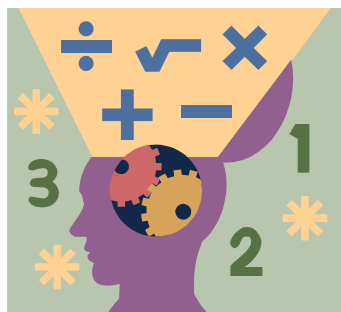
1. Find a book you like and click on "Add to this List" on the far right side of the screen. This will add the book to your own list called "My List".
2. Add as many books as you want to your list.
3. To view your list, click on "Resource Lists" on the left of the screen. Then click on "My List".
4. To print the list, click on "Printable" at the top right of the page. You can bring the list to school and already know what you want and where to look for it.
5. If you need a citation for a book report and you don't have the book, click on "Citation" on the right side and all the information needed will come up.

Birthday Book Club

Do you want to donate a book to the East Ridge Library? Last year we received 89 books! You can do this for your child's birthday, half birthday, or just because!

Our Librarian, Ms. Chwirka, has a wish list on Amazon.com called "East Ridge Library". You can order a book and bring it in to the library. If you spend \$25 you will get free shipping. You will find directions on accessing the Amazon Wishlist, as well as a detailed flyer about the Birthday Book Club at www.erpta.org/committees - scroll down to "Friends of the Library".

Questions? **Contact Friends of the Library Chair Sandy Skeel** at library@erpta.org



K-12 Math Curriculum Review

Volunteers Needed

Washington State PTA has been asked by the Office of the Superintendent of Public Instruction to find three parents who have both strong interest and aptitude in high school mathematics to participate in the 9-12 Math Curriculum Review work which will take place November 9-14 in the SeaTac area.

Right now we are forming a pool of parents who would be willing to participate. Those interested should send the following information to khoward@wastatepta.org by October 15: Your name, phone Number, email address, brief description of why you are interested in doing this work and a brief description of why you think that you are a strong candidate.

Selection will be made, and applicants notified, soon after the deadline.

Questions? **Contact Kim Howard at the WSPTA office** khoward@wastatepta.org or 253-565-2153

PTA Calendar

October 2008

Thursdays	October 2-30	Chess Club - 3:15 - 4:30pm
Mondays	October 6-27	ASAP Classes 3:15 - 4:45pm
Friday	October 17	Popcorn Friday - Don't Forget Your Quarter!
Tuesday	October 28	ASAP Arts Open House - 7pm in Gym



November 2008

Sunday	November 2	Daylight Savings Time Ends! Don't forget to "Fall Back" one hour
Monday	November 3	PTA Board Meeting - 9:30am
Monday	November 10	No School - Teacher Work Day
Tuesday	November 11	No School - Veteran's Day
Friday	November 14	Popcorn Friday - Don't Forget Your Quarter!
Monday	November 17	PTA Newsletter Published www.erpta.org/newsletter.html
Thursday - Wednesday	November 20- 26	Early Dismissal at 12:00pm and No AM Kindergarten
Thursday - Friday	November 27 - 28	No School - Thanksgiving

